

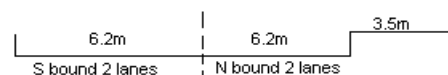
YEAR 2015

COVERAGE (B) STATION 4215

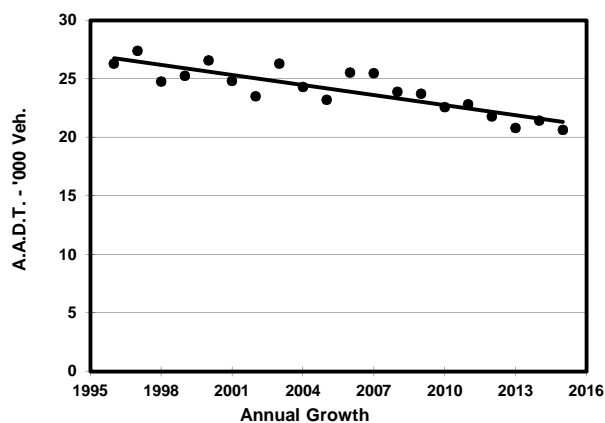
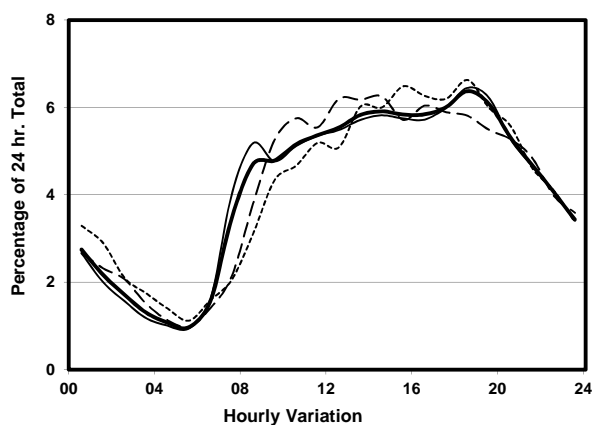
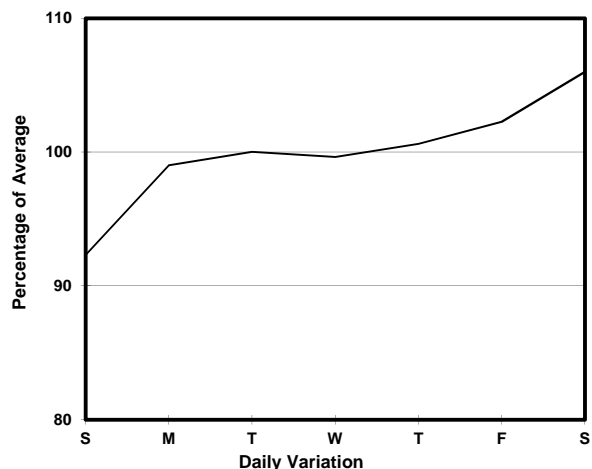
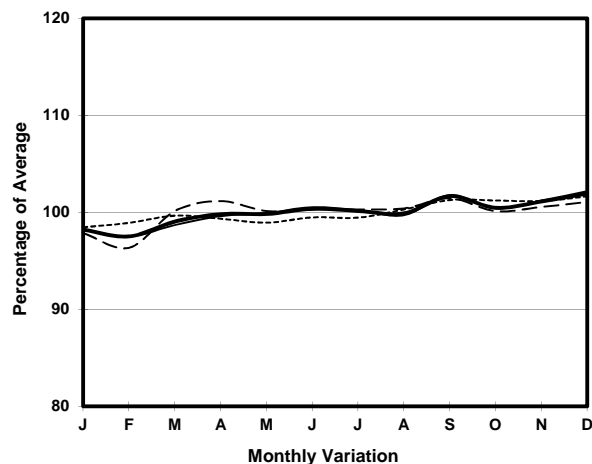
ROAD NETWORK MAJOR

ROAD TYPE DISTRICT DISTRIBUTOR

LINK YIM PO FONG ST (from SHANTUNG ST to WATERLOO RD)



## 1. TRAFFIC FLOW VARIATION AND GROWTH



## 2. TRAFFIC CHARACTERISTICS (BY DIRECTION)

Parameter	All - Day	Mon. - Fri.	Sat.	Sun.
<b>SOUTH BOUND</b>				
A.A.D.T.	10370	10410	11290	9570
R 12 / 24 - %	66	66.1	67.4	63.6
R 16 / 24 - %	85.8	86.2	85.8	83.9
AM Peak Hour	0800-0900	0800-0900	0900-1000	0900-1000
One-way flow at AM peak hour	530	590	580	440
T - % (AM)	-	1.9	-	-
PM Peak Hour	1800-1900	1800-1900	1600-1700	1800-1900
One-way flow at PM peak hour	690	700	740	670
T - % (PM)	-	3.1	-	-
Prop.of commercial vehicles - 16 hr.	-	3.4	-	-
<b>NORTH BOUND</b>				
A.A.D.T.	10240	10360	10650	9530
R 12 / 24 - %	63.7	64.6	61.7	60.6
R 16 / 24 - %	84.1	85	82.6	81
AM Peak Hour	0900-1000	0800-0900	0900-1000	0900-1000
One-way flow at AM peak hour	470	480	580	390
T - % (AM)	-	2.2	-	-
PM Peak Hour	1800-1900	1800-1900	1600-1700	1800-1900
One-way flow at PM peak hour	620	640	590	590
T - % (PM)	-	2.3	-	-
Prop.of commercial vehicles - 16 hr.	-	2.7	-	-

## 3. OTHER INFORMATION AND COMMENT

**Coverage (B) Station 4215**  
**Year 2015**

**4. Vehicle classification and occupancy - Monday to Friday**

Time		Class of vehicle									
		Motor	Private	Taxi	Private	PLB	Goods veh.		Non	Fr. Bus	
		Cycle	Car		LB		Light	M & H	Fr. Bus	SD	DD
0700-0800	Pro	0.7	22.0	47.5	2.8	14.2	7.1	0.7	4.3	0.5	0.2
	Ocp	1.0	1.6	1.9	5.3	11.8	1.5	1.0	6.8	16.7	7.0
0800-0900	Pro	1.1	46.2	21.2	3.0	11.9	14.5	0.4	1.1	0.6	0.0
	Ocp	1.3	1.4	1.9	8.1	14.9	1.9	3.0	10.7	17.5	0.0
0900-1000	Pro	2.9	33.8	25.2	1.2	7.8	21.9	2.9	3.3	0.9	0.1
	Ocp	1.0	1.3	1.9	3.7	11.2	1.5	1.7	10.9	11.1	1.0
1000-1100	Pro	2.9	22.4	40.7	1.2	5.8	24.1	1.2	0.8	0.7	0.0
	Ocp	1.0	1.2	1.6	1.7	8.7	1.4	1.0	1.0	8.1	0.0
1100-1200	Pro	2.0	25.8	40.2	0.4	6.3	22.3	1.6	0.8	0.8	0.0
	Ocp	1.0	1.3	1.8	5.0	9.1	1.5	1.3	1.0	6.9	0.0
1200-1300	Pro	0.8	35.7	30.3	1.2	7.9	22.4	0.4	0.4	0.7	0.0
	Ocp	1.0	1.5	1.5	2.7	5.7	1.2	1.0	11.0	9.3	0.0
1300-1400	Pro	4.3	26.9	40.9	0.7	6.1	18.3	0.4	1.8	0.7	0.0
	Ocp	1.2	1.5	2.2	2.0	12.4	1.8	1.0	2.4	11.1	0.0
1400-1500	Pro	2.4	30.6	34.9	2.0	3.1	23.6	0.8	2.0	0.7	0.0
	Ocp	1.0	1.4	1.9	1.8	11.9	1.5	1.5	4.8	12.1	0.0
1500-1600	Pro	2.5	28.4	32.7	1.4	5.7	24.1	1.4	3.2	0.6	0.0
	Ocp	1.1	1.4	2.0	1.3	10.3	1.6	1.3	6.2	15.7	0.0
1600-1700	Pro	3.8	45.5	24.1	0.0	7.2	15.8	1.5	1.5	0.7	0.0
	Ocp	1.1	1.5	1.8	0.0	11.9	1.5	1.5	1.8	16.9	0.0
1700-1800	Pro	8.6	39.5	22.3	1.5	8.2	19.4	0.0	0.0	0.6	0.0
	Ocp	1.2	1.4	2.6	1.8	14.0	1.4	0.0	0.0	18.0	0.0
1800-1900 Peak hour	Pro	5.7	39.9	29.2	0.0	10.7	11.7	0.0	2.0	0.7	0.0
	Ocp	1.0	1.4	2.3	0.0	15.1	1.5	0.0	4.2	14.3	0.0
1900-2000	Pro	5.3	41.6	31.7	0.3	10.9	7.4	0.0	2.2	0.7	0.0
	Ocp	1.1	1.6	2.3	1.0	14.1	1.5	0.0	5.9	10.4	0.0
2000-2100	Pro	1.5	44.2	34.6	2.5	8.6	5.6	0.5	1.5	0.9	0.0
	Ocp	1.3	1.4	2.2	1.8	13.6	1.4	1.0	28.7	7.7	0.0
2100-2200	Pro	0.9	46.2	40.0	0.0	6.2	5.3	0.0	0.9	0.7	0.0
	Ocp	1.5	1.8	2.1	0.0	10.9	1.8	0.0	9.5	9.2	0.0
2200-2300	Pro	5.8	42.7	30.4	0.0	15.2	4.1	0.0	1.2	0.6	0.0
	Ocp	1.3	1.6	2.7	0.0	10.3	1.4	0.0	21.0	9.5	0.0
16 hours	Pro	3.3	35.9	32.3	1.1	8.2	16.0	0.7	1.6	0.7	0.1
	Ocp	1.1	1.5	2.0	3.5	12.1	1.5	1.4	7.5	11.9	4.0

**Legend**

**Pro.** Proportion of vehicles in % (Sum may not add up to 100% due to figure rounding)\*

**Ocp.** Average occupancy of vehicles including both driver and passengers\*

**M&H** Medium and Heavy

\* All traffic data are collected from combined bounds except for one way traffic